

# WINCORE™

## WINDOWS & DOORS

250 Staunton Turnpike, Parkersburg, WV 26104

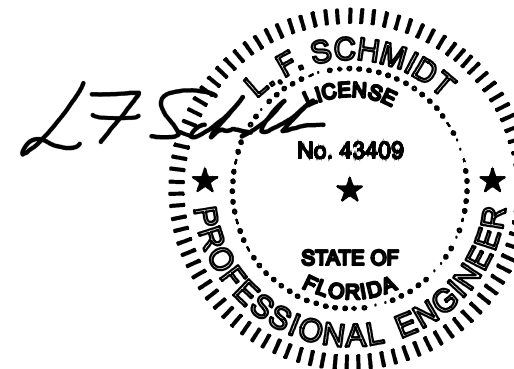
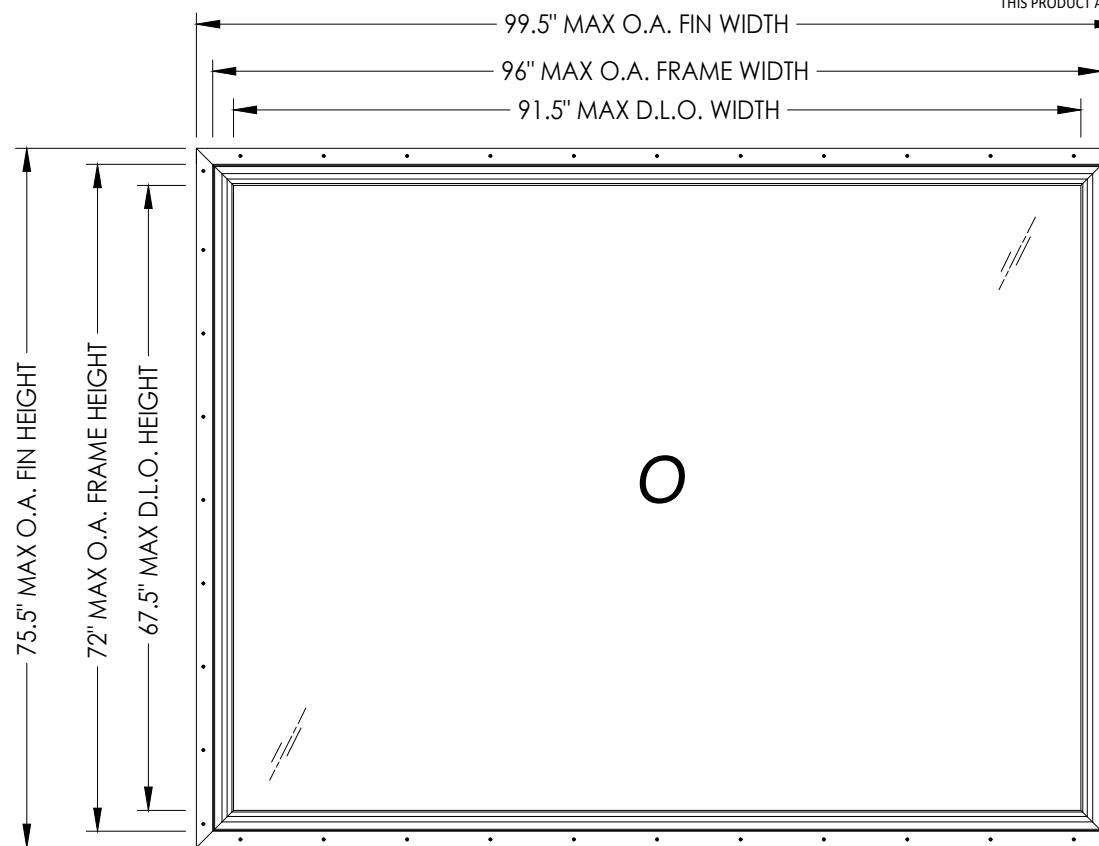
### 400/500 Series Vinyl Fixed Window w/ Nailing Fin "NON-IMPACT"

#### GENERAL NOTES

1. This product has been evaluated and is in compliance with the 8th Edition (2023) Florida Building Code (FBC) structural requirements excluding the "High Velocity Hurricane Zone" (HVHZ).
2. Product anchors shall be as listed and spaced as shown on details. Anchor embedment to base material shall be beyond wall dressing or stucco.
3. When used in areas requiring wind borne debris protection this product is required to be protected with an impact resistant covering that complies with FBC Sections 1609.1.2 & R301.2.1.2.
4. For 2x stud framing construction, anchoring of these units shall be the same as that shown for 2x buck masonry construction. Increase anchor length to account for exterior sheathing.
5. Site conditions that deviate from the details of this drawing require further engineering analysis by a licensed engineer or registered architect.

#### TABLE OF CONTENTS

| SHEET# | DESCRIPTION  |
|--------|--|
| 1      | Typical elevations, design pressures and general notes |
| 2      | Horizontal cross sections                              |
| 3      | Buck & frame anchoring                                 |
| 4      | Bill of materials, components and glazing details      |



This item has been digitally signed and sealed by L. F. Schmidt, P.E. on the date adjacent to the seal. Printed copies of this document are not considered signed and sealed and the signature must be verified on any electronic copies.

THIS PRODUCT APPROVAL IS VALID ONLY FOR THE STATE OF FLORIDA

| MAX. FRAME DIMENSION | MAX. D.L.O. DIMENSION | GLASS TYPE | DESIGN PRESSURE (PSF) |          |
|----------------------|-----------------------|------------|-----------------------|----------|
|                      |                       |            | POSITIVE              | NEGATIVE |
| 48.0" X 36.0"        | 43.5" X 31.5"         | G4         | +50.0                 | -50.0    |
| 45.0" X 44.0"        | 40.5" X 39.5"         | G4         | +45.0                 | -45.0    |
| 60.0" X 34.0"        | 55.5" X 29.5"         | G4         | +40.0                 | -40.0    |
| 72.0" X 28.0"        | 67.5" X 23.5"         | G4         | +35.0                 | -35.0    |
| 84.0" X 24.0"        | 79.5" X 19.5"         | G4         | +30.0                 | -30.0    |
| 52.0" X 52.0"        | 47.5" X 47.5"         | G3         | +50.0                 | -50.0    |
| 63.0" X 44.0"        | 58.5" X 39.5"         | G3         | +50.0                 | -50.0    |
| 72.0" X 48.0"        | 67.5" X 44.5"         | G3         | +40.0                 | -40.0    |

| MAX. FRAME DIMENSION | MAX. D.L.O. DIMENSION | GLASS TYPE | DESIGN PRESSURE (PSF) |          |
|----------------------|-----------------------|------------|-----------------------|----------|
|                      |                       |            | POSITIVE              | NEGATIVE |
| 60.0" X 59.0"        | 55.5" X 54.5"         | G3         | +35.0                 | -35.0    |
| 84.0" X 42.0"        | 79.5" X 37.5"         | G3         | +35.0                 | -35.0    |
| 96.0" X 38.0"        | 91.5" X 33.5"         | G2         | +50.0                 | -50.0    |
| 84.0" X 58.0"        | 79.5" X 53.5"         | G2         | +50.0                 | -50.0    |
| 96.0" X 58.0"        | 91.5" X 53.5"         | G2         | +45.0                 | -45.0    |
| 77.0" X 72.0"        | 72.5" X 67.5"         | G2         | +45.0                 | -45.0    |
| 84.0" X 66.0"        | 79.5" X 61.5"         | G2         | +35.0                 | -35.0    |
| 95.5" X 71.5"        | 91.0" X 67.0"         | G1         | +35.0                 | -35.0    |

Documents Prepared By:  
Lyndon F. Schmidt  
P.E. No. 43409

**RW** BUILDING CONSULTANTS, INC.  
P.O. Box 230, Vairico, FL 33595  
Phone No.: 813.659.9197  
FBPE Registry No. 9813

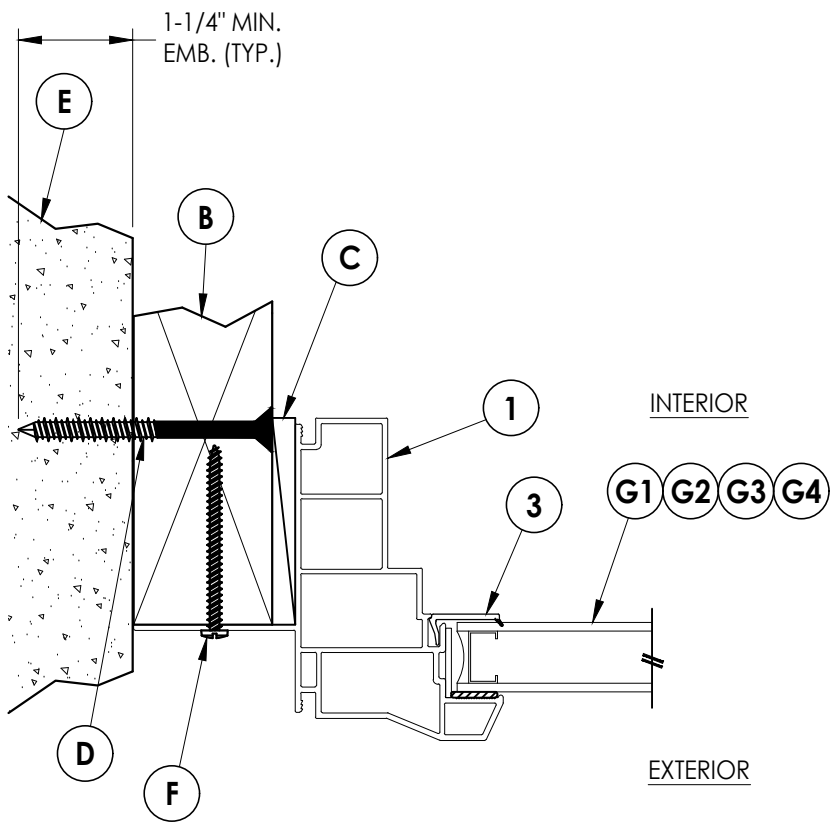
PRODUCT: 400/500 SERIES

PART OR ASSEMBLY:  
TYPICAL ELEVATION, DESIGN PRESSURES & GENERAL NOTES

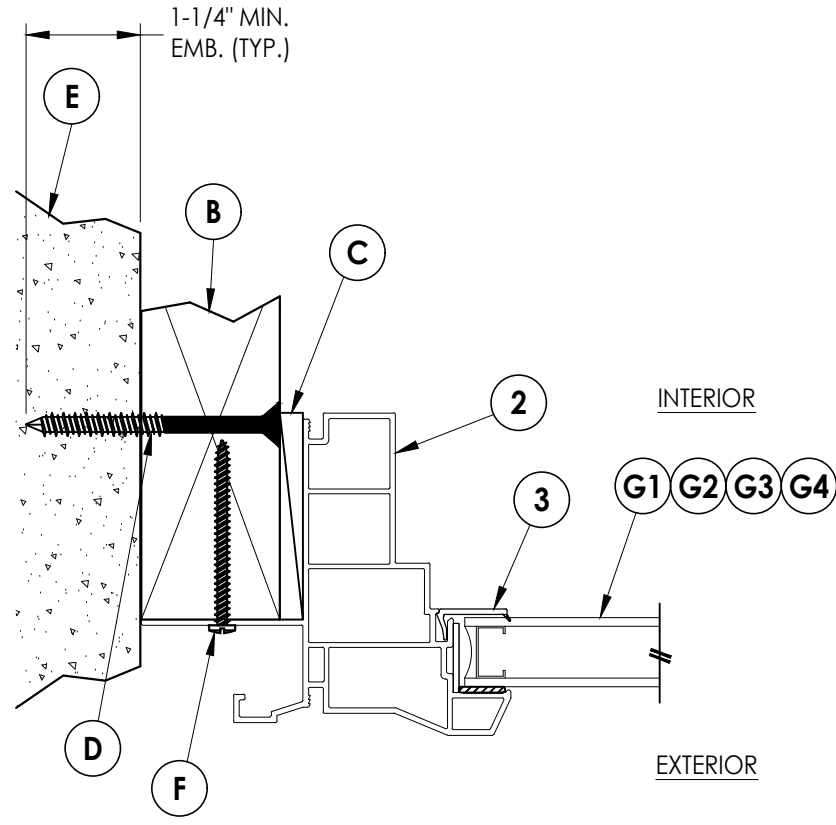
| NO. | DATE    | BY  |
|-----|---------|-----|
| 4   | 7/06/23 | LFS |
| 3   | 7/06/20 | LFS |
| 2   | 6/01/17 | LFS |
| 1   | 2/09/15 | LFS |

REVISIONS

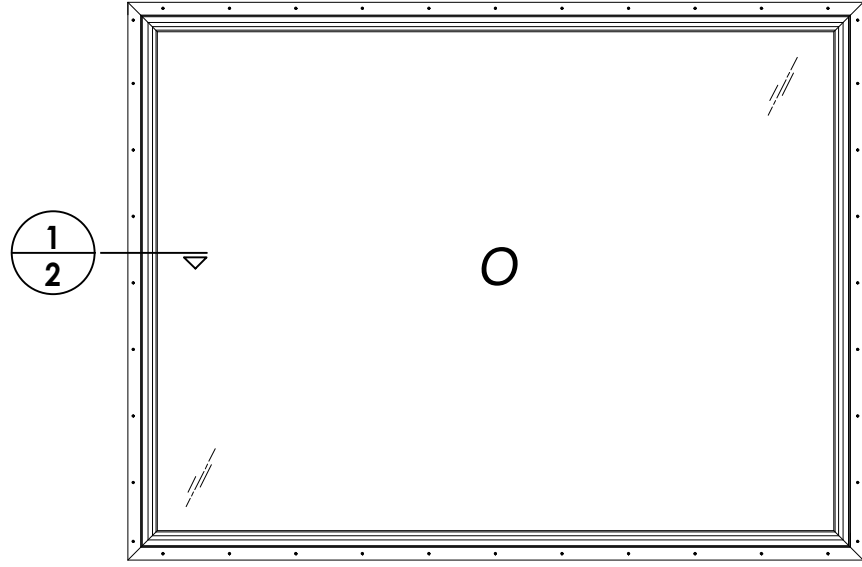
DATE: 8/18/14  
SCALE: N.T.S.  
DWG. BY: JK  
CHK. BY: LFS  
DRAWING NO.: FL-15816.7  
SHEET 1 OF 4



**1 HORIZONTAL CROSS SECTION**  
**2** Shown w/ 400 Series Frame



**1 HORIZONTAL CROSS SECTION**  
**2** Shown w/ 500 Series Frame w/ J-Channel

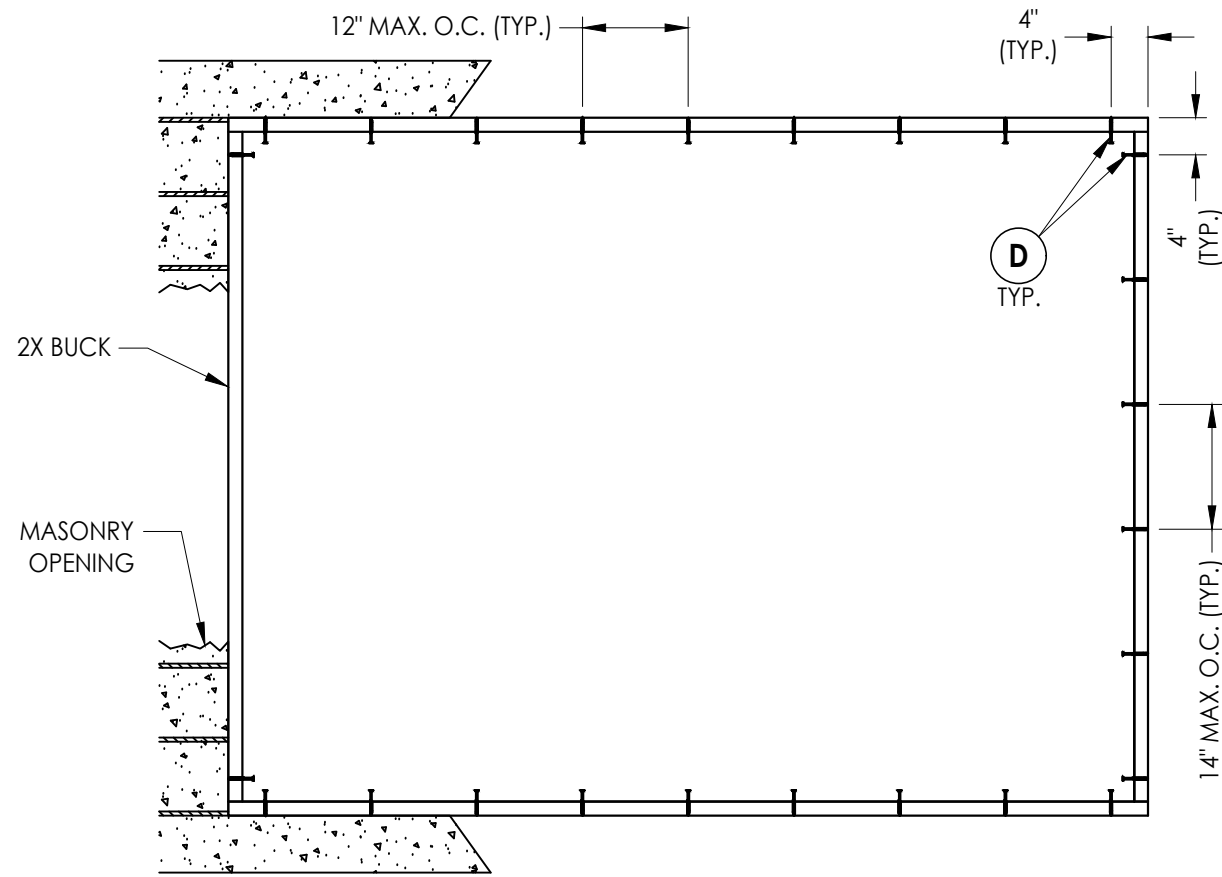


| NO. | DATE    | REVISIONS                        |
|-----|---------|----------------------------------|
| 4   | 7/06/23 | UPDATE TO 8TH ED. (2023) FBC LFS |
| 3   | 7/06/20 | UPDATE TO 7TH ED. (2020) FBC LFS |
| 2   | 6/01/17 | UPDATE TO 6TH ED. (2017) FBC LFS |
| 1   | 2/09/15 | UPDATE TO 5TH ED. (2014) FBC LFS |

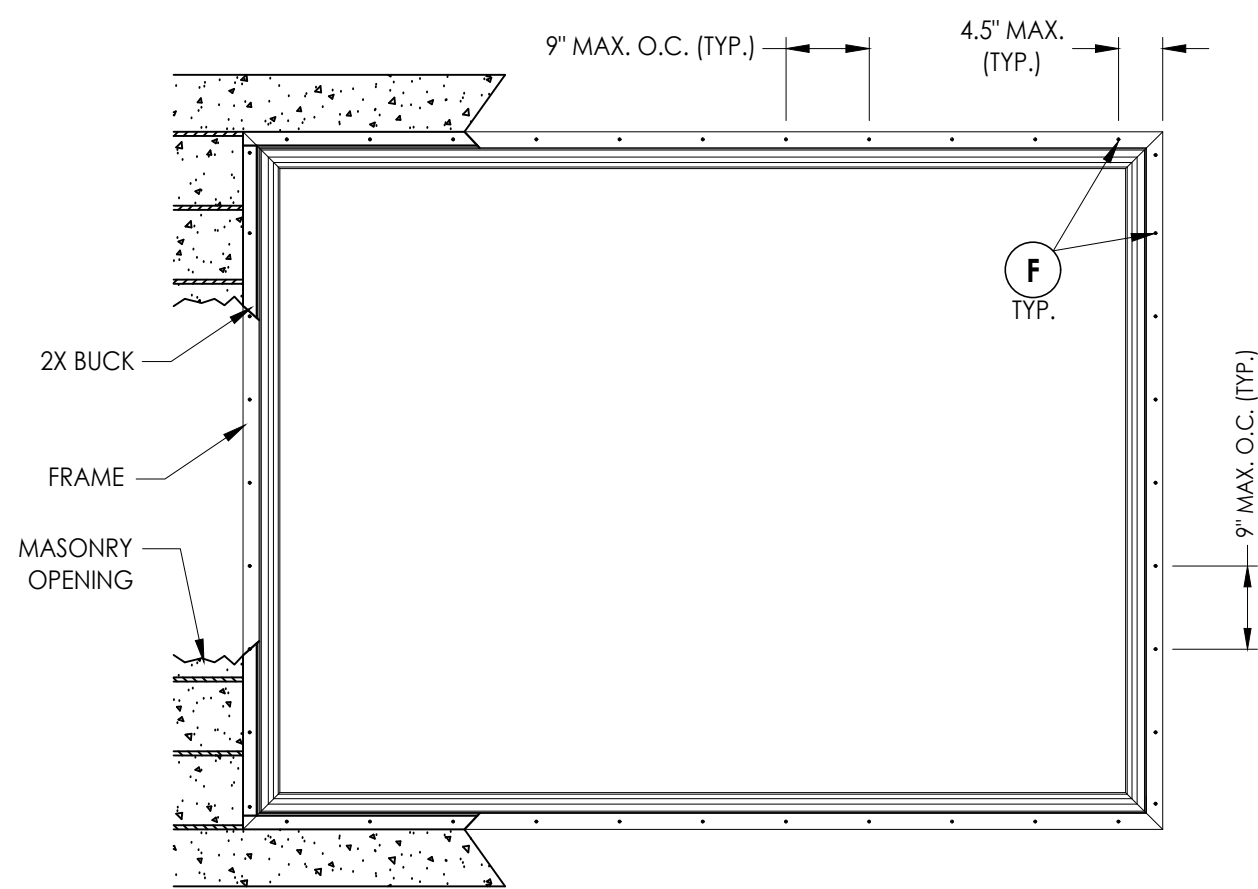
DATE: 8/18/14  
 SCALE: N.T.S.  
 DWG. BY: JK  
 CHK. BY: LFS  
 DRAWING NO.: FL-15816.7  
 SHEET 2 OF 4

PRODUCT: 400/500 SERIES  
 PART OR ASSEMBLY: HORIZONTAL CROSS SECTIONS

Documents Prepared By:  
 Lyndon F. Schmidt  
 P.E. No. 43409  
 RW BUILDING CONSULTANTS, INC.  
 P.O. Box 230, Vairico, FL 33595  
 Phone No.: 813.659.9197  
 FBPE Registry No. 9813



**BUCK ANCHORING**



**FRAME ANCHORING**

**CONCRETE ANCHOR NOTES:**

- Concrete anchor locations at the corners may be adjusted to maintain the min. edge distance to mortar joints.
- Concrete anchor locations noted as "MAX. ON CENTER" must be adjusted to maintain the min. edge distance to mortar joints, additional concrete anchors may be required to ensure the "MAX. ON CENTER" dimension are not exceeded.
- Concrete anchor table:

| ANCHOR TYPE      | ANCHOR SIZE | MIN. EMBEDMENT | MIN. CLEARANCE TO MASONRY EDGE | MIN. CLEARANCE TO ADJACENT ANCHOR |
|------------------|-------------|----------------|--------------------------------|-----------------------------------|
| ITW TAPCON®      | 1/4"        | 1-1/4"         | 2"                             | 4"                                |
| DeWALT ULTRACON® | 1/4"        | 1-1/4"         | 1"                             | 4"                                |

**WOOD SCREW INSTALLATION NOTES:**

- Maintain a minimum 5/8" edge distance, 1" end distance, & 1" o.c. spacing of wood screws to prevent the splitting of wood.

Documents Prepared By:  
Lyndon F. Schmidt  
P.E. No. 43409

**RW**  
BUILDING CONSULTANTS, INC.  
P.O. Box 230, Valrico, FL 33595  
Phone No.: 813.659.9197  
FBPE Registry No. 9813

PRODUCT: 400/500 SERIES

PART OR ASSEMBLY:  
BUCK & FRAME ANCHORING

| NO. | DATE    | BY  | REVISIONS                    |
|-----|---------|-----|------------------------------|
| 4   | 7/06/23 | LFS | UPDATE TO 8TH ED. (2023) FBC |
| 3   | 7/06/20 | LFS | UPDATE TO 7TH ED. (2020) FBC |
| 2   | 6/01/17 | LFS | UPDATE TO 6TH ED. (2017) FBC |
| 1   | 2/09/15 | LFS | UPDATE TO 5TH ED. (2014) FBC |

DATE: 8/18/14

SCALE: N.T.S.

DWG. BY: JK

CHK. BY: LFS

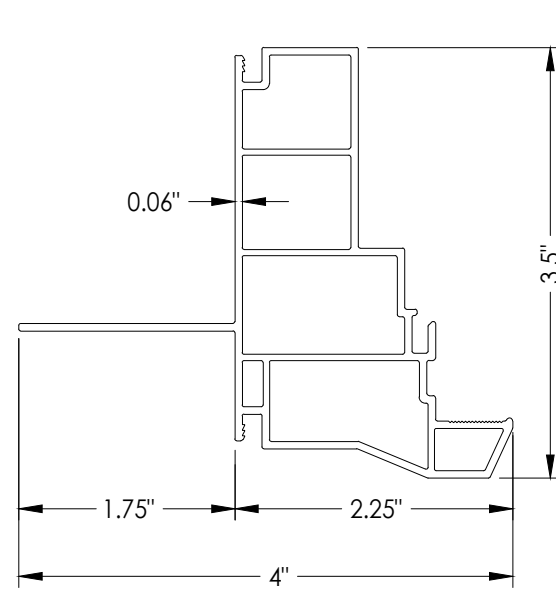
DRAWING NO.:

FL-15816.7

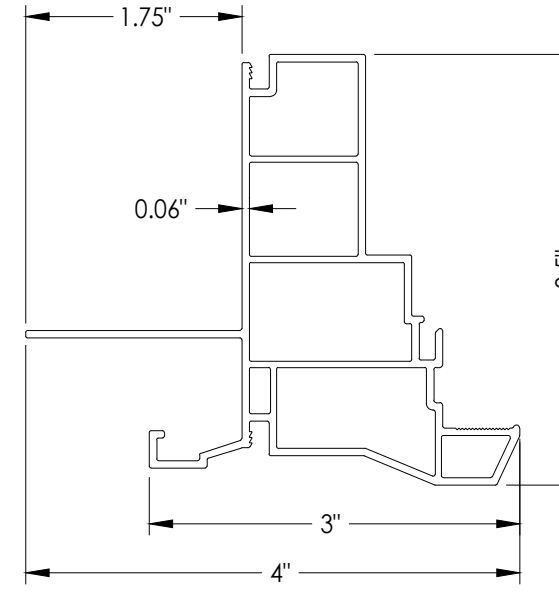
SHEET 3 OF 4

| BILL OF MATERIALS |  |          |
|-------------------|--|----------|
| ITEM #            | DESCRIPTION  | MATERIAL |
| B                 | 2X BUCK (SG >= 0.42)   | WOOD     |
| C                 | 1/4" MAX. SHIM SPACE   | -        |
| D                 | 1/4" X 2-3/4" PFH DeWALT OR ITW CONCRETE SCREW   | STEEL    |
| E                 | MASONRY - 3,000 PSI MIN. CONCRETE CONFORMING TO ACI 301 OR HOLLOW BLOCK CONFORMING TO ASTM C90 | CONCRETE |
| F                 | #10 X 2" PPH WOOD SCREW (1-7/8" MIN. EMBEDMENT)  | STEEL    |
| 1                 | FRAME (P15401E)*   | PVC      |
| 2                 | FRAME (PI5401)*  | PVC      |
| 3                 | GLAZING BEAD (22841)*  | PVC      |

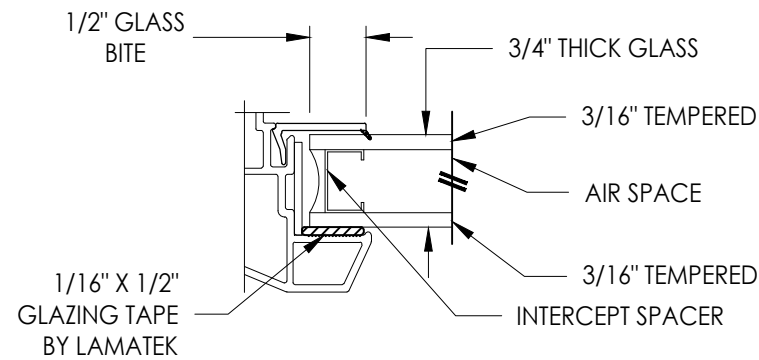
\* THE APPROVED WHITE RIGID PVC EXTERIOR EXTRUSIONS FOR WINDOWS ARE TO BE PRODUCED BY EXTRUDERS LICENSEES IN "AAMA CERTIFICATION PROGRAMS FOR RIGID PVC EXTRUSIONS".



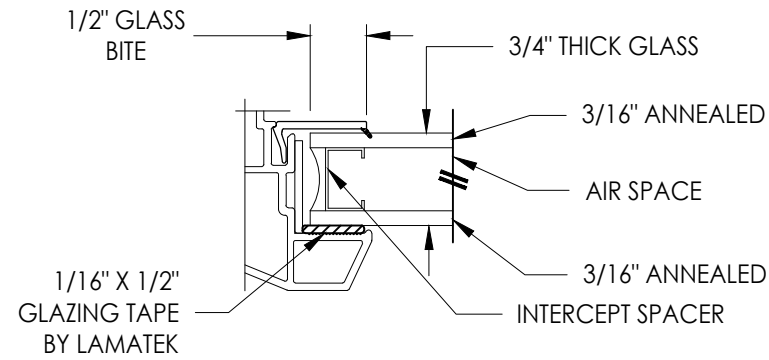
1 FRAME (400 Series)



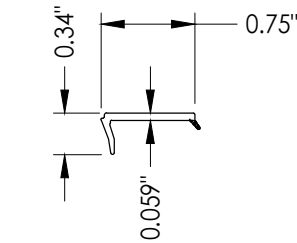
2 FRAME (500 Series w/ J-Channel)



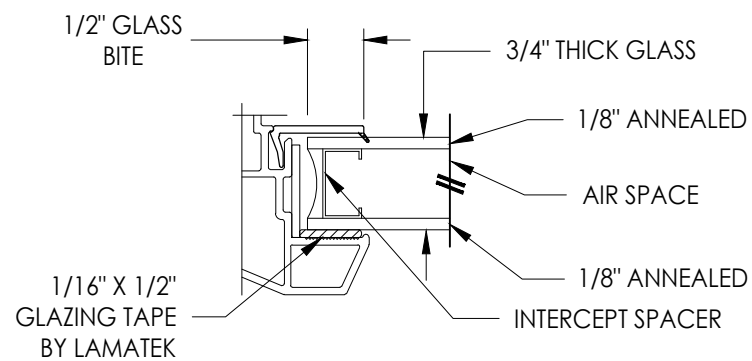
G1 GLAZING DETAIL



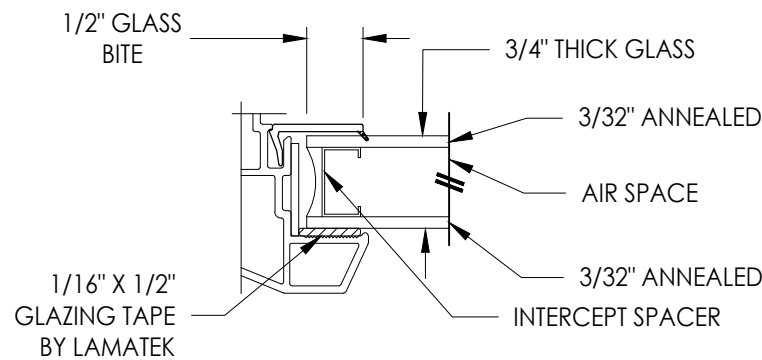
G2 GLAZING DETAIL



3 GLAZING BEAD



G3 GLAZING DETAIL



G4 GLAZING DETAIL

Documents Prepared By:  
Lyndon F. Schmidt  
P.E. No. 43409

**RW** BUILDING CONSULTANTS, INC.  
P.O. Box 230, Valrico, FL 33595  
Phone No.: 813.659.9197  
FBPE Registry No. 9813

PRODUCT: 400/500 SERIES

PART OR ASSEMBLY:  
BILL OF MATERIALS, COMPONENTS  
AND GLAZING DETAILS

| NO. | DATE    | BY  |
|-----|---------|-----|
| 4   | 7/06/23 | LFS |
| 3   | 7/06/20 | LFS |
| 2   | 6/01/17 | LFS |
| 1   | 2/09/15 | LFS |

REVISIONS

DATE: 8/18/14  
SCALE: N.T.S.  
DWG. BY: JK  
CHK. BY: LFS  
DRAWING NO.: FL-15816.7  
SHEET 4 OF 4